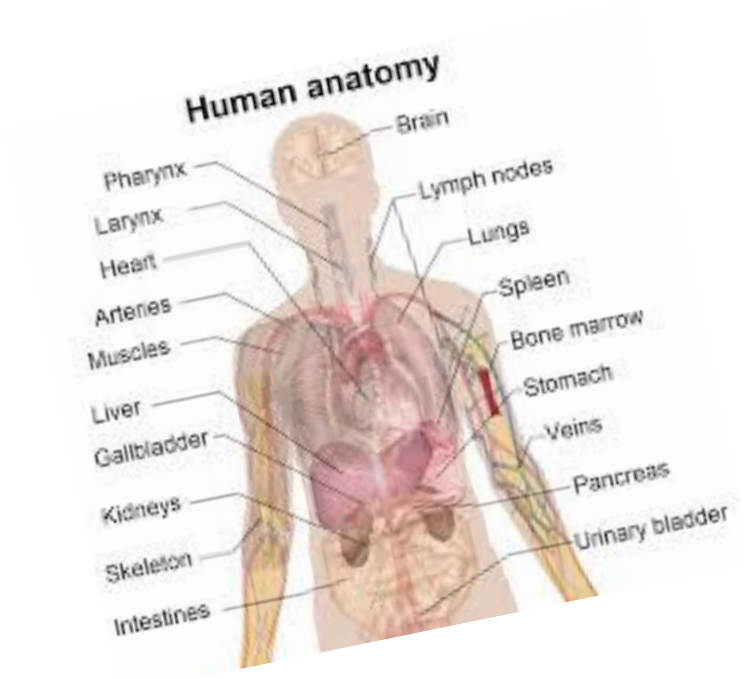
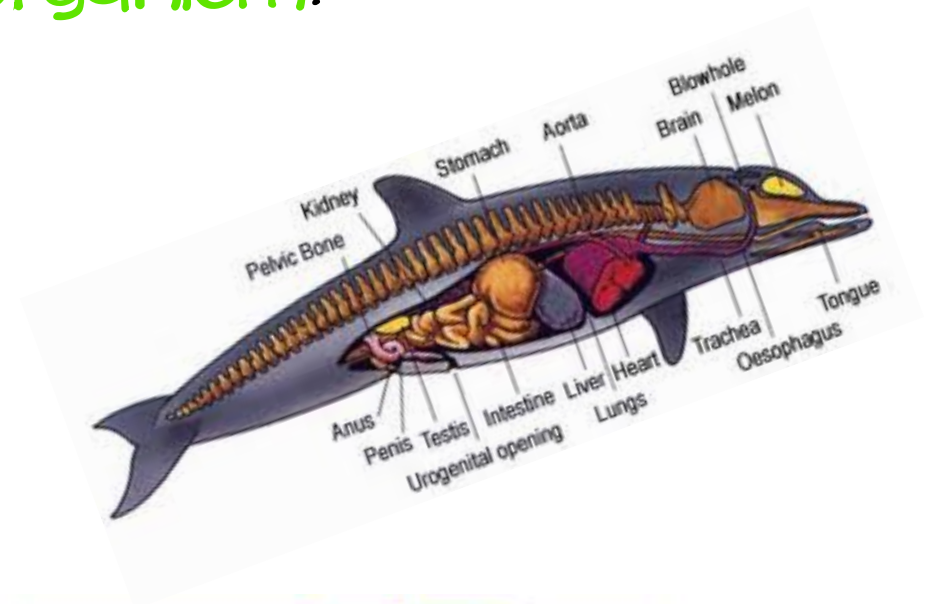
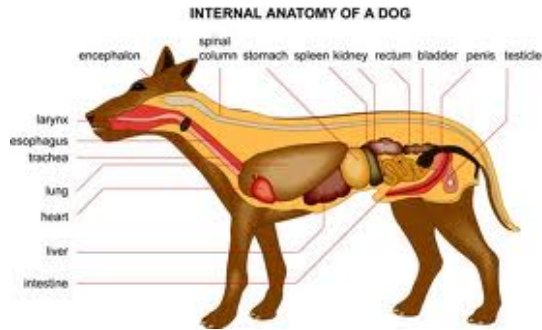


ANATOMY

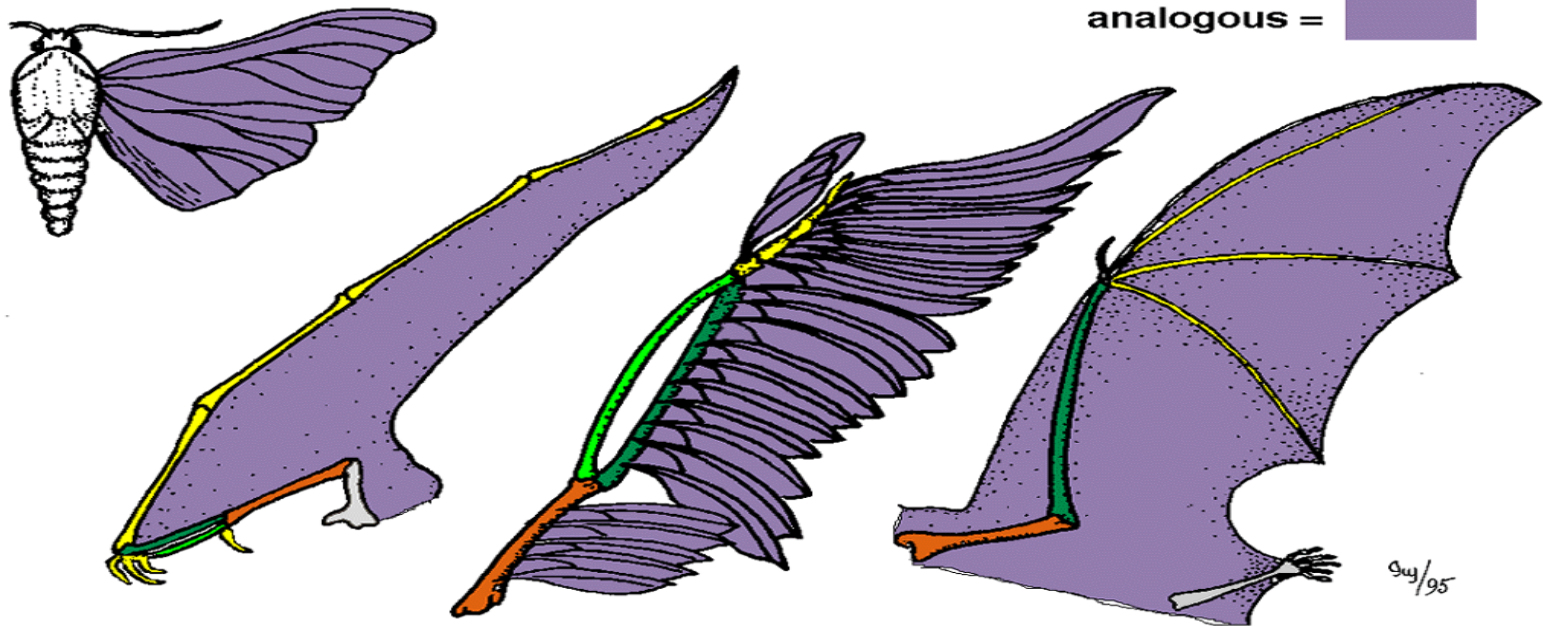
Anatomy is the study of the **structure**, or parts, of an **organism**.



ANALOGOUS STRUCTURES

Some apparently unrelated animals have **organs with similar functions**, yet are **very different in structure and form**, and **do not come from the same embryological tissues**.

These structures are called analogous structures.



HOMOLOGOUS STRUCTURES

Homologous structures are *formed in similar ways* during embryonic development and *share like arrangements*, however they *can have different forms and functions*.

